

Christmas Shopping Weekend 3rd and 4th December 2016 - 10am to 4pm

Once again the talented artists of Project Workshops will welcome you into their studios where you can see the marvellous work they create and take time out to chat with them.

There will be a vast range of bespoke, original art work on show and plenty of shopping opportunities too – many of the artists offer lessons and demonstrations for groups and a voucher for a day or weekend course can make an original Christmas gift idea for the friend who has everything!

New resident artist Reginald Thompson will be showcasing his glass jewellery and perfume bottles. Ava Reeves has been developing her unique surreal abstract work using painting, etching, large scale drawings and sculpture, all of which will be on show in her studio. You will need to come early to see the full range of Elaine Peto's ceramic sculptures as these are very popular. Tim Chadsey will have his beautifully crafted furniture on display.

Glass Blowing demonstrations will be given throughout the day with our resident glassmakers Mark Taylor and David Hill. The Talos Art Foundry will also be open, with an exhibition on the making of bronze sculptures and highlighting recent projects including new work by Caroline Wallace, Georgie Welch, Tessa Cambell-Fraser, and Scilla Hann.

The Life Studio will have an exhibition promoting new talent from visiting artists which includes paintings, pottery and jewellery.

Entry for our Christmas Shopping weekend is free and there is ample free parking and disabled toilet facilities. Large parties and children under supervision are very welcome. Put the date in your diary now for this popular Open Studios Weekend.

3rd and 4th December 2016 - 10am to 4pm

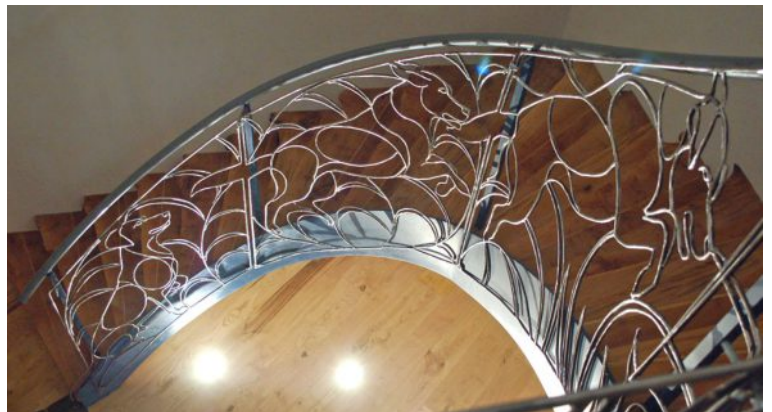


A series of perfume bottles by Reginald Thompson

Amy Goodman - Sculptor and Portrait Artist

This summer Amy installed her specially commissioned, welded-steel balustrade into a client's farmhouse in the magnificent surroundings of Derbyshire.

With helpful feedback from her clients, she designed and created their labradors, chasing hares and pheasants up the staircase, and up onto the wall. It was quite an undertaking, and the complex installation was achieved with assistance from fellow Project Workshops resident, Marek Woznica, who also made special bespoke fixings for this exciting piece.



Amy has recently secured an exciting commission for 16 Air Assault Brigade. She has been commissioned to create a life-size statue of Bellerophon astride Pegasus, the iconic symbol of the British Army's Airborne Forces.

The bronze statue will stand outside Brigade Headquarters in Merville Barracks, Colchester as a reminder to today's airborne soldiers of the proud history that they represent and the standards that have been set for them to uphold.

Amy's work in progress, two metres high and in clay can be viewed in her studio during the Christmas Shopping weekend.



Maquette of Bellerophon astride Pegasus

Reginald Thompson - Lamp-blown Glass

Reg has recently joined Project Workshops after many years working as a scientific glassblower. Over the last few years he has put his skills to use in making a select range of perfume bottles and glass earrings.



Soraya French - Artist

Soraya combines an exhibiting career alongside teaching mixed media workshops as well as writing art books and regular articles for The Artist magazine. She is the Vice president of The Society of Women Artists and exhibits her paintings at their annual exhibition at The Mall Galleries in London. She shares Studio 11 with her husband Tim who organizes all their events such as workshops, trips abroad and exhibitions.

This year, we have welcomed students from all corners of the UK, as well as Israel, Australia and Ireland. Most workshops are now fully booked; please contact us to check availability.

Marek Woźnica - Metal Worker

The summer has proved busy as usual for Marek, and has included a commission for the Hawk Conservancy in the form of a Secretary bird brooch made especially for their gift shop. The theme for the next few months is birds of prey, and Marek is now approaching all the centres in the UK.

He has also secured several private commissions from the Open Studios weekend in May 2016, one on the theme of 'holding hands' and the other a miniature Spitfire pin, both of which have been well received... and so the wheels of industry turn ever onward in Studio 7.



Robyn Golden-Hann - Letter Cutter

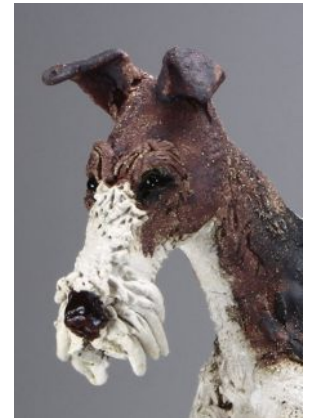
Now in her eleventh year at Project Workshops, Robyn carves inscriptions in stone and slate by hand. In an age of computerisation and mechanisation, Robyn uses only traditional methods to lovingly create unique, bespoke monuments, memorials and inscriptions in stone as well as lettered sculptural pieces.

Work for this year has included a monument for the WRNS to commemorate 100 years of women's service in the Royal Navy; a Portland Stone monument permanently sited at Portsmouth Cathedral (marking her 5th commission to date for the Cathedral).

Elaine Peto - Ceramicist

Hand built ceramic stoneware animal sculptures.

As well as her popular hares, horses and dogs, new sculptures will follow an agricultural theme, including Devon breeds of cattle, pigs and sheep. On another new theme she has also created a troupe of baboons for a recent show.



Matt Duke - Sculptor

This December, after a successful year Matt will be debuting two new pieces of work.

As well as sales through galleries and his website, Matt exhibited at a large Fine Art fair at Doddington Hall. He was also given the opportunity to show his work at Grand Designs Live.

This year has seen more sales of Barn Owl, Patience and Luna and with these editions now coming to an end, Matt's current focus is to produce new work. He has been developing work involving the concept of 'impact' and the relationship between shape and force, as well as studies of British wildlife. Matt hopes to explore silver as a finish, and the new perspective and sentiment that this will bring to the work.

Tim Chadsey - Furniture Maker

I am continuing to use colour and tone in my furniture to great effect and over the last year have been busy making quite a few tables of different types and sizes. On the order book and generating enquiries at the moment are yet more tables! – a console table in English rippled Ash, a pair of bedside tables also in Ash and a dining table in beautiful English Brown Oak as well as a double bed to be made in Maple.

"Furniture which people can look at happily day after day and also functions it is supposed to – that's what good design is all about."



Linda Powell - Artist

I am working on a series of canvases some very large, to document a fresh range of wet and wooded views near my new home, working largely in oils or acrylic on canvas.

My studio classes are buzzing with inspiration. Watercolourists are perfecting expressive techniques while pastel painters find new ways to describe texture and blend their way toward success.



Mark Taylor and David Hill - Glassmakers

Mark and David research and reproduce ancient and historical glass. This involves experimental work, both in the UK and in Germany, and collaboration with archaeologists, students of glass, and other glassworkers.

Our reproductions sell to those involved in education and historical research, collectors, film and TV programme makers, as well as the fans of those programmes: our 18th century glasses and bottles are in great demand, particularly from the fans of 'Outlander'.

One interesting order for 2016 was to produce over sixty late 18th century bottles for James Madison's Montpelier, in Virginia - the 18th century family home of the fourth president of the USA.

Ava Reeves - Artist

Ava has been developing her unique surreal abstract work using painting in ink, acrylic and oils, etching, large scale drawings and sculpture.

She writes: "I am interested in following my own line or the marks made by chance, being interested by an accidental drip, each mark having a personality which causes a reaction. The work has a beginning, a journey and an end, and I have to decide when each journey is over. At times these paintings talk to me of faith, of sadness, of love, or allude to light shining in the darkness, church windows, sun shining through trees"



Sally Milligan - Artist

A love of landscape, capturing the atmosphere and ever changing light has been the main focus of my work. I primarily work from sketches and drawings made on the spot and positively look forward to being in my studio to work on them. Apart from my local and Welsh paintings, I have now begun to explore abstract work.

Painting is much to do with the emotions, getting them onto canvas is the challenge, a never ending one.

My workshops have been very successful. I am so inspired by seeing the results – and the happy faces of students!

Geoff Hague - Knifemaker

Geoff is continuing to fulfil commissions from his expanding order book. He is designing and developing several new patterns for his folding pocket knives.

New work is being planned for a major international knife show to be held in Paris in 2017, at which Geoff has been invited to exhibit.



Damien Rochford - Sculptor

Damien is a figurative sculptor specializing in limited edition bronzes of the human form, portraits and wildlife.

Recently my time has been spent finishing several sculptures I've had on the go for some months now. These include two quite large bird sculptures, one is of a Tern about to take flight, and the other is a Garden Warbler, perched on a large spherical form.

Other newly completed pieces include a 'Sitting Tiger' (roaring), and a 'Sitting Fox'. I'm quite excited about finishing these pieces and look forward to seeing them cast in bronze over the coming months.

Talos Art Foundry - Bronze Foundry



Tessa Cambell-Fraser working on her 'Hind' in the foundry

The foundry has had its busiest year ever, with large commissions to complete for several of its established artists: a life size horse for Caroline Wallace, two large memorial pieces for Georgie Welch, a life size stag and hind for Tessa Cambell-Fraser, three life size fishermen for Scilla Hann, and two nine-foot tall figures for Vivi Mallock – as well as a continuous demand for smaller pieces by artists including Philip Blacker, Judy Boyt and Susie Wilson.

We have also attracted a record number of new artists this year, our latest being Will Davies, whose day job is stonemason at Winchester Cathedral: we hope to have his portrait of Air Chief Marshal Sir Hugh Dowding on display for the Project Workshops Christmas Open Weekend alongside Tessa's Stag and Hind – a very special display.

We will also be launching the new 'Talos look' designed to attract a new generation of artists to the foundry and maintain our enviable reputation for quality and reliability amongst our cherished regular clients. The logo has been designed to give a modern slant to our centuries-old craft and will be stamped on all bronzes cast by Talos at Project Workshops from 2017.



Caroline Wallace's 'Hello Sanctos' installed at Cantley Hall

Mandy Atkinson-Willes- Potter

Mandy is able to combine owning and running Project Workshops with her keen interest in ceramics. She is continuing to develop both her ash glazed urns and her colourful domestic stoneware pots. Mandy has recently been to La Meridiana International Centre of Ceramics in Tuscany which gave her the opportunity to really concentrate on throwing skills gaining huge confidence and inspiration. This new work will be on display in the Life Studio at the Christmas Show.



Resident Artists Exhibitions 2016

Elaine Peto

19th - 20th November: *Art In Clay*, Farnham, Surrey
20th - 29th August: *Celebration of Craftsmanship and Design*, Cheltenham

Amy Goodman

8th - 22nd November: *Hound and Horse*, Duke's Auction House, Brewery Square, Dorchester

life studio at Project Workshops

Our weekly Pilates and Yoga classes continue in this lovely venue as do the Life Drawing classes on Wednesday evenings, and painting classes with Linda Powell on Friday mornings.

If you are interested in any of these classes or would like to hire the Life Studio for workshops, meetings or classes you can contact Mandy on 01234 889889 for further details.

All artists can be contacted through the Project Workshops website, and studios are open to visitors by arrangement.

Christmas Sale Weekend 3rd - 4th December 2016

Open Studios Weekend 13th - 14th May 2017

Richard Atkinson-Willes - Sculptor



Talos director Richard Atkinson-Willes has been experimenting on a new series of sculptures inspired by his son Ben's company Active Minds, which creates amazing activities and aids to help those afflicted with Alzheimer's disease and dementia.

The new sculptures explore the abstract concepts of thought and memory – and try to visualise dementia as a physical illness, which of course it is.

This piece is called 'Memories alarmed by the spectre of Alzheimer's' and is inspired by the wonderful Stubbs painting 'Horse alarmed by a lion'.

Richard's new work will be on show at the Project Workshops Christmas Shopping Weekend.

Vivien Mallock - Sculptor

Working principally in bronze, Vivien is as much at home with small figurative pieces of both human and wildlife subjects, as she is with larger-than-life public sculptures including the many military memorials she has created.

She is much in demand for bronze portraits but also enjoys works which rely on atmosphere and movement to create their effect.

